

FDE Series

Electric High Pressure Washer



Applications

- Removes tough grime, paint, and rust from machinery and buildings.
- Prepares surfaces for painting or coating by removing old coatings.
- Clean debris and stains from construction tools and surfaces.
- Removes barnacles, algae, and salt deposits from ships and offshore platform.
- Clean pipeline and storage tank in chemical plant.

Key Features

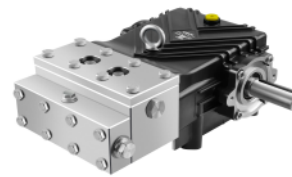
- Featuring a stainless steel pump head with enhanced corrosion resistance, durability, and reliability
- The Soft Start Control Box facilitates smooth motor startups, mitigating stress and electric surges to extend motor longevity.
- Water and Phase Shortage Protection System protects the motors and pumps from damage due to insufficient water or electricity supply.

Standard Accessories

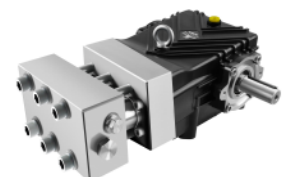
- Intelligent Electric Control Box (Soft Start)
- Industrial grade low speed motor
- Coupling
- Stainless Steel High Pressure Plunger Pump
- Stainless Steel Pressure Booster Pump
- Pressure Regulating Valve
- Safety Valve
- High Precision Filter
- Stainless Steel Anti-Vibration Pressure Gauge
- Stainless Steel Frame
- Water Tank
- Industrial Grade High Pressure Spray Gun
- Fan Shape Nozzle
- 10 Meter High Pressure Hose
- Rotating Nozzle

Optional Accessories

- Pressure Switch
- Foot Valve
- Extended High Pressure Hose
- Sandblaster Equipment
- Drain Cleaning Nozzle and Hose



FDK



FDH

Stainless Steel Pump

Models and Specification

Model	Voltage(Ph/V/Hz)	Flow Rate(L/min)	Pressure(Bar/Mpa/PSI)	Power(KW)	RPM	Weight(kg)	Dimension (L x W x H mm)
FDE 8/200	3/440/60	8	2000/100/29000	30	900	390	1350 x 680 x 1100
FDE 15/100	3/440/60	15	1000/120/14500	30	1000	390	1350 x 680 x 1100
FDE 20/80	3/440/60	20	800/80/11600	30	1450	390	1350 x 680 x 1100
FDE 25/60	3/440/60	25	600/100/8700	30	1450	390	1350 x 680 x 1100
FDE 30/50	3/440/60	30	500/75/7250	30	1450	390	1350 x 680 x 1100
FDE 38/40	3/440/60	38	400/40/5800	30	1450	390	1350 x 680 x 1100
FDE 50/30	3/440/60	50	300/30/4350	30	1450	390	1350 x 680 x 1100
FDE 56/26	3/440/60	56	260/26/3770	30	1450	390	1350 x 680 x 1100
FDE 100/15	3/440/60	100	150/15/2175	30	1450	390	1350 x 680 x 1100
FDE 120/13	3/440/60	120	130/13/1885	30	1450	390	1350 x 680 x 1100
FDE 150/10	3/440/60	150	100/10/1450	30	1450	390	1350 x 680 x 1100